

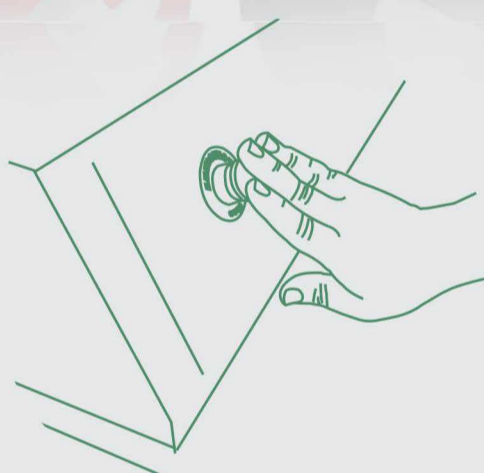
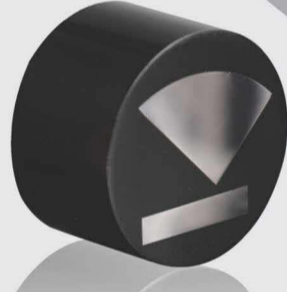
METPOL 2V

VARIABLE SPEED DOUBLE DISC
GRINDER / POLISHER



Fully moulded FRP cover.
Design enables discs with different
grits / polish cloth to be used
in desired steps.

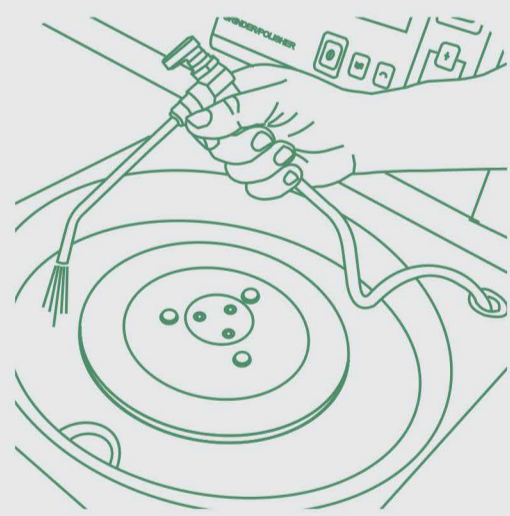
Mirror
Finished
Surface



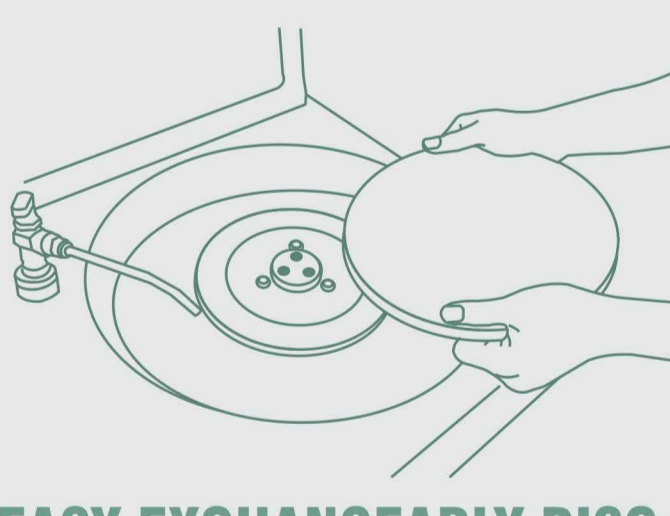
EMERGENCY STOP



FRONT CONTROL PANEL
WITH FEATHER TOUCH
BUTTONS



FOR EASY CLEANING



EASY EXCHANGEABLE DISC

Wheel Size	8" / 10" / 12" (200 / 254 / 305 mm) Double
Wheel Speed	Variable Speed 50-600 RPM
Wheel Direction	Clockwise / Counter Clockwise
Motor	½ Hp High torque Motor

Dimensions	H: 14 X L: 29" X D: 27"
12" (Dim.)	H: 14 X L: 34" X D: 27"
Weight	98 Lbs (45 kg)
Main	110V, 1Phase, 50/60 Hz
Colour	RAL Glossy Grey

Price Starts from
\$3,300 USD
Includes \$250 start-up consumables



MetLab
Corporation

www.metlabcorp.com

USA 4011 Hyde park Blvd.
Niagara Falls NY 14305
CDN 4065 Stanley Ave.
Niagara Falls On L2E 4Z1
Ph: +1800-828-6866