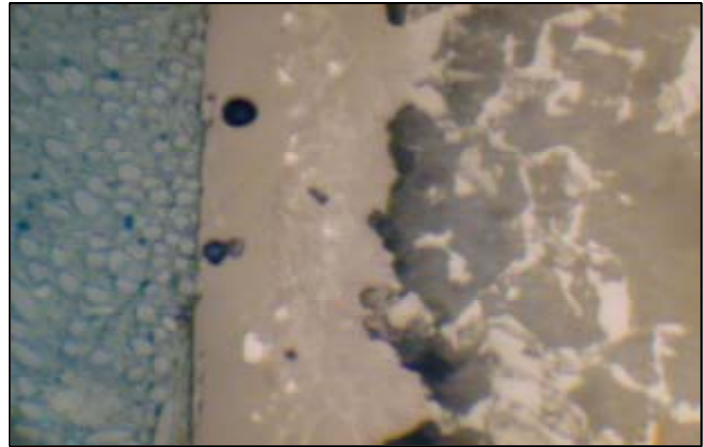


Material : Historical China (ceramic)

Method No. : M01

Results:

The microstructure of an Iznik (Nicea) china from 15th century. In polished surface, the coated and pointed zone are clearly seen. The dispersion of bentonid bonded quarsit grains is homogeneous. Low cutting force with low feed is recommended.



Preparation Method:

Cutting: Abrasive Cut-off machine with Metlab Abrasive Wheel

Mounting: Cold Mounting

Mechanical Preparation: Metpol-A

Steps	Surface	Abrasive	Lubricant	Force per Sample, (N)/(PSI)	Time min.	Disc Speed, rpm	Relative Rotation
1	S/C Paper Disc	180 Grit	Water	30/6	2 min. or until plane	300	Contra
2	S/C Paper Disc	400 Grit	Water	30/6	2	300	Contra
3	S/C Paper Disc	600 Grit	Water	25/5	2	300	Contra
4	S/C Paper Disc	800 Grit	Water	25/5	2	300	Contra
5	S/C Paper Disc	1200 Grit	Water	20/4	2	250	Contra
6	Vellap Cloth	.25 μ Diamond Suspension	Blue Lube	15/3	4	150	Contra

FOR MORE DETAILED INFORMATION PLEASE REFER TO METLAB PRICE LIST