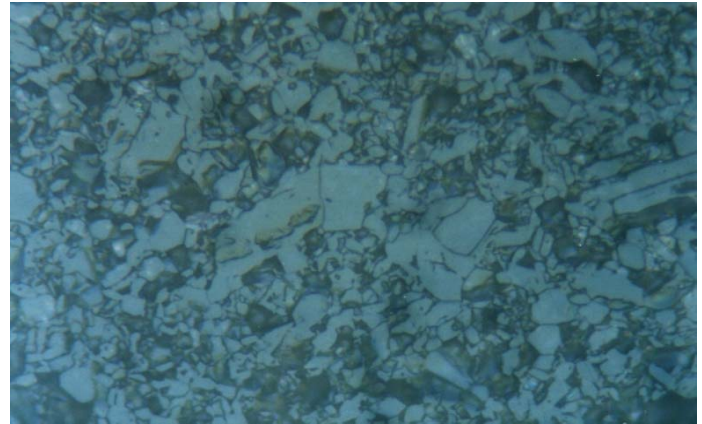


Material : Alumina

Method No. : I02

Results

In this slip-casted and sintered alumina grain structure is easily seen. Due to high hardness level, diamond grinding pads can also be used for grinding operation.



Alumina, DIC

Magnification: 800X

Etching: Phosphoric Acid (boiling)

Preparation Method:

Cutting: Abrasive Cut-off machine with Metlab Abrasive Wheels

Mounting: Mounting Press with Diallyl Phthalate

Mechanical Preparation: Metpol-A

Steps	Surface	Abrasive	Lubricant	Force per Sample, (N)/(PSI)	Time min.	Disc Speed, rpm	Relative Rotation
1	PIANO	YELLOW	Water	25/5	1	250	Contra
2	PIANO	BLUE	Water	25/5	1	300	Contra
3	Dac Cloth	3 μ Diamond Suspension	Blue Lube	15/3	4	150	Contra
4	Metlab Cloth	1 μ Diamond Suspension	Blue Lube	15/3	1	150	Contra

FOR MORE DETAILED INFORMATION PLEASE REFER TO METLAB PRICE LIST