

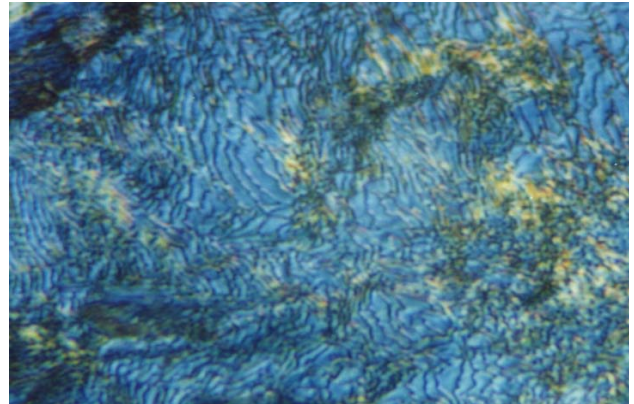
**Material** : Steel, Pearlitic

**Micrologue**

**Method No.** : A03

**Results** :

Pearlitic steels are usually quenched and tempered. Microstructure is completely pearlitic. In high magnifications pearlitic constituents are observed.



**Pearlitic structure**

Magnification: 1600X

Etching: 3%

**Preparation Method:**

**Cutting:** Abrasive Cut-off machine with Metlab RC-35-50 Abrasive Wheels

**Mounting:** Mounting Press with Black Epoxy

**Mechanical Preparation:** Metpol-A

Parameter Stage	Surface	Abrasive	Lubricant	Force per Sample, (N)/(PSI)	Time min.	Disc Speed, rpm
MP Step 1.	PIANO	YELLOW Diamond grinding	Water	25/5	1	250
MP Step 2.	PIANO	BLUE Diamond grinding	Water	25/5	1	300
MP Step 3.	DAC CLOTH	3 $\mu$ Diamond Suspension	Blue Lube	15/3	4	150
Final Polishing	METLAB CLOTH	1 $\mu$ Diamond Suspension	Blue Lube	15/3	1	150

**Etching:** 3% Nital

**FOR MORE DETAILED INFORMATION  
PLEASE REFER TO METLAB PRICE LIST**



---



% Nital

---

<b>Relative Rotation</b>
Contra
Contra
Contra
Contra