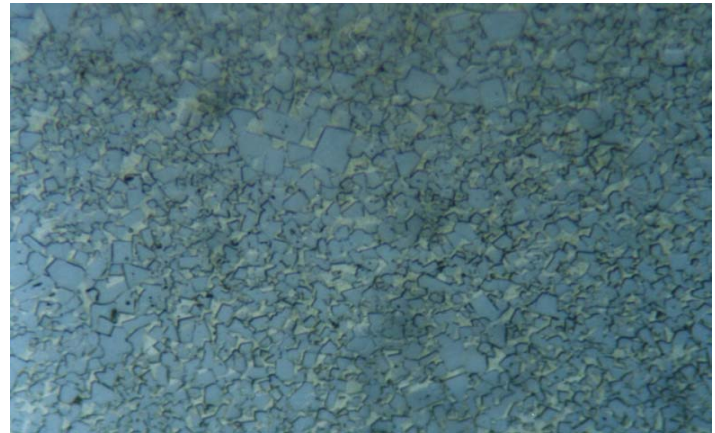


Material : WC-Co Powder Metal

Method No. : I01

Results

Regularly shaped WC particles can easily be seen in the microstructure of this cermet sample containing %80 - 97 WC (+TiC) and Co. Diamond grinding pads can also be used for grinding process. After etching, potassium permanganate solution helps to obtain attractive images.



WC-Co Sinter Metal, DIC
Magnification: 800X Etching: Murakami

Preparation Method:

Cutting: Abrasive Cut-off machine with Metlab Abrasive Wheels

Mounting: Mounting Press with Diallyl Phthalate

Mechanical Preparation: Metpol-A

| Steps | Surface | Abrasive | Lubricant | Force per Sample, (N)/(PSI) | Time min. | Disc Speed, rpm | Relative Rotation |
|-------|--------------|----------------------------|-----------|-----------------------------|-----------|-----------------|-------------------|
| 1 | PIANO | YELLOW | Water | 25/5 | 1 | 250 | Contra |
| 2 | PIANO | BLUE | Water | 25/5 | 1 | 300 | Contra |
| 3 | Dac Cloth | 3 μ Diamond Suspension | Blue Lube | 15/3 | 4 | 150 | Contra |
| 4 | Metlab Cloth | 1 μ Diamond Suspension | Blue Lube | 15/3 | 1 | 150 | Contra |

FOR MORE DETAILED INFORMATION PLEASE REFER TO METLAB PRICE LIST